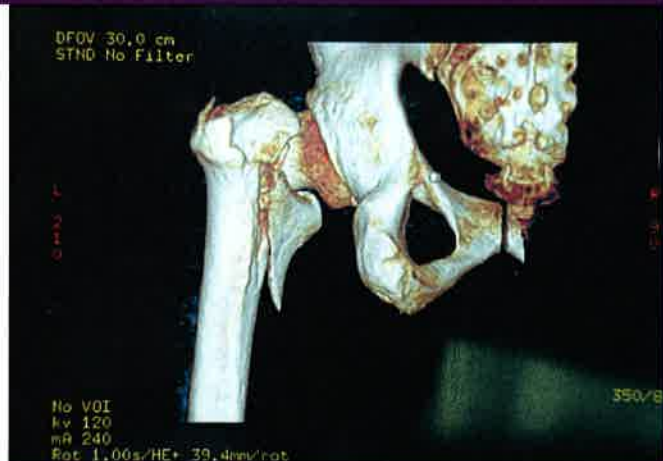


## Safety Alert: Missed hip fractures



### A PAIN IN THE GROIN...

National incident data reveals we miss hip fractures for reasons that include:

- **Not considering imaging for collapse or fall due to medical problem**  
Ensure documentation of hip/pelvis exam & have a low threshold for imaging.
- **Not considering re-imaging for patients that return with ongoing pain**
- **Accepting a normal radiograph despite ongoing pain**

Normal plain radiographs?

- Re-examine the patient
- Can they straight leg raise?
- Is there pain on hip internal or external rotation?
- Can the patient weight bear, are they in pain?

**If clinical concern of a fracture remains, consider cross sectional imaging (CT or MRI - agreed locally)**

**For other RCEM issued Safety Alerts and Safety Newsflashes see:**

**[www.rcem.ac.uk/safetyalerts](http://www.rcem.ac.uk/safetyalerts)**